

Flat fan dovetail nozzles

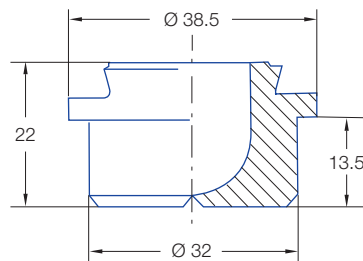
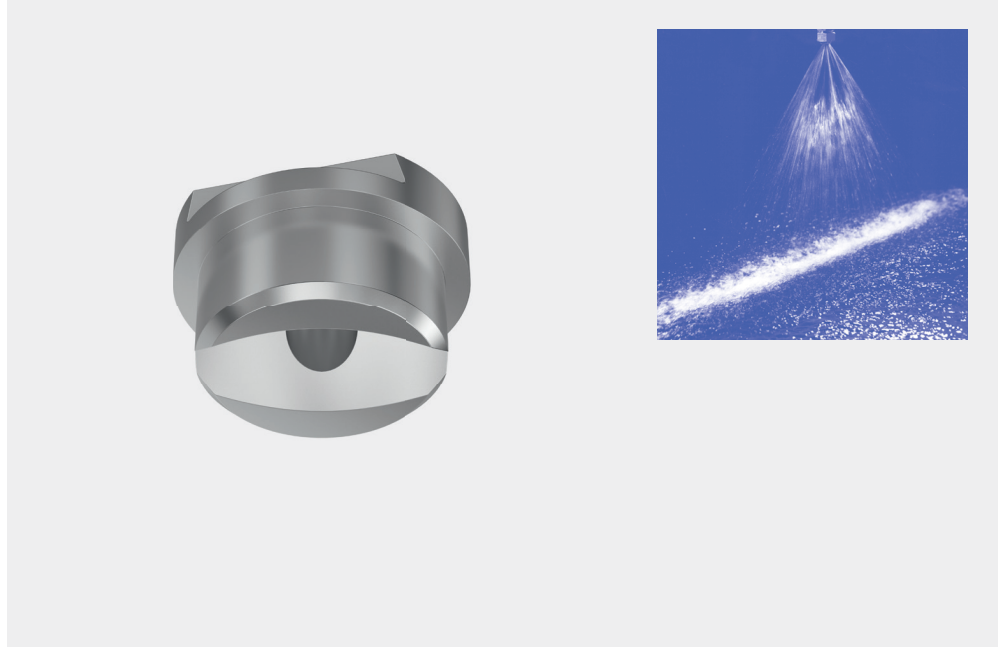
Series 669

The 669 series nozzles come with the conventional, automatic self aligning dovetail connection which ensures that every nozzle will always be installed under the correct spray offset angle towards the roll center line.

This nozzle family allow very large flow rates for roughing mill, plate mill and strip cooling applications.

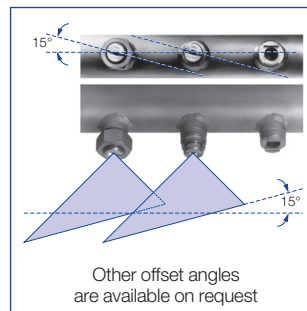
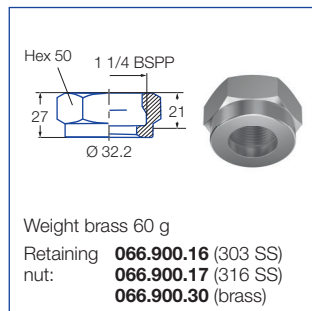
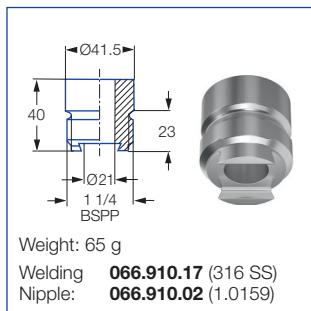
All tips have an automatically built in 15° offset angle if the welding nipple is welded in line with the centre line of the spray header. Any other offset angle has to be compensated for by welding the nipple under a different angle (minus the 15° inbuilt offset angle).

The spray has a parabolic liquid distribution which is ideal for a multi nozzle header arrangement.



Weight brass: 135 g

Accessories



Technical data and ordering data for accessories see page 18.

Ordering no.						E Ø [mm]	V̇ [l/min]							
Type				Mat. no.			p [bar]							
20°	30°	45°	60°	16 303 SS	30 Brass		0.5	1.0	2.0	[US gal./ min] at 40* psi	3.0	5.0	7.0	10.0
669.041	669.042	669.043	669.044	○	○	5.5-6.5	20.00	28.28	40.00	12.41	48.99	63.25	74.83	89.44
669.121	669.122	669.123	669.124	○	○	7.3-8.3	31.50	44.55	63.00	15.50	77.16	99.61	117.86	140.87
669.201	669.202	669.203	669.204	○	○	9.5-10.6	50.00	71.00	100.00	31.00	122.00	158.00	187.00	224.00
669.281	669.282	669.283	669.284	○	○	9.4-13	80.00	113.00	160.00	49.60	196.00	253.00	299.00	358.00

E = narrowest free cross section · Subject to technical modifications.

Spray width [B] at p=3 bar		
	H 250 mm	H 500 mm
669.041-669.281	115	210
669.042-669.282	160	310
669.043-669.283	250	490
669.044-669.284	340	640

Example of ordering:	Type	+	Material no.	=	Ordering no.
	669.041	+	16	=	669.041.16

Conversion formula for the above series: $\dot{V}_2 = \dot{V}_1 * \sqrt{\frac{p_2}{p_1}}$

